

A vibrant landscape photograph featuring a dense green forest covering rolling hills and a prominent waterfall cascading down a rocky cliff on the left side. The sky is blue with scattered white clouds. The text is overlaid on the center of the image.

Knowledge Support Service for Biodiversity

A collaborative approach to data, knowledge and learning to
accelerate nature action

Value proposition

The **purpose** of the knowledge support service for biodiversity (GKSSB) is to support Parties and major groups to implement and monitor the Kunming-Montreal Global Biodiversity Framework.

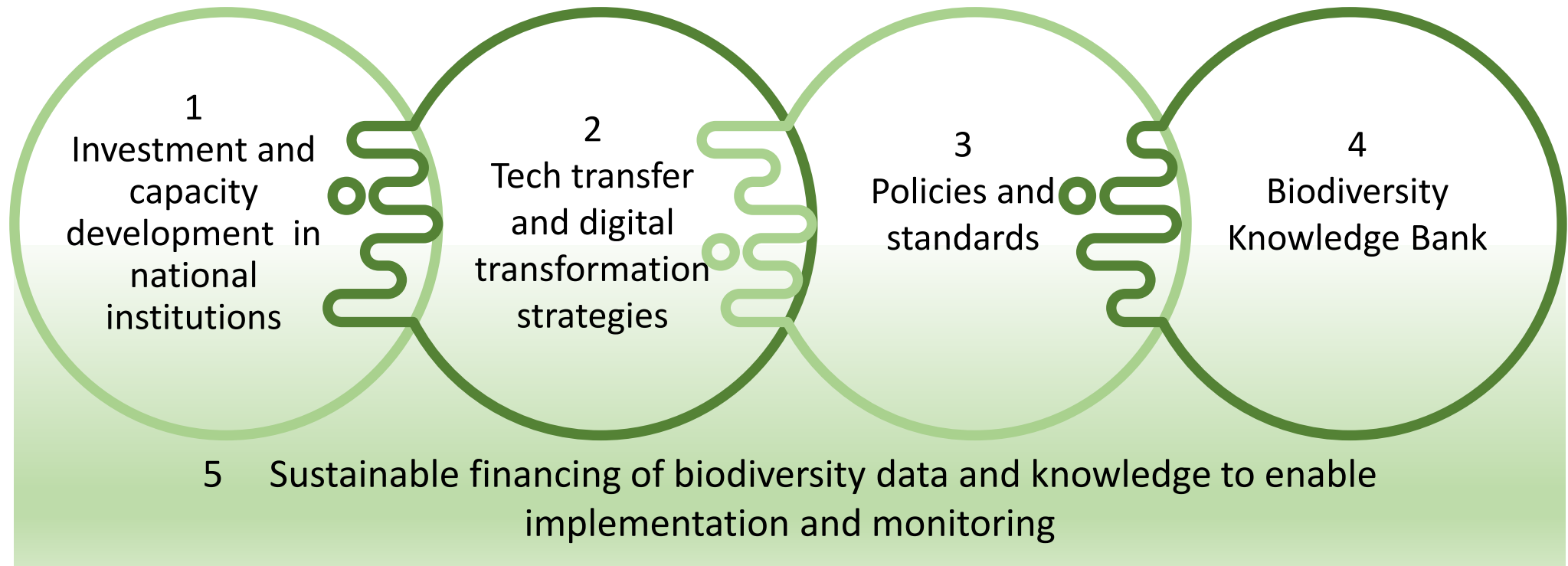
Collaborating in a **federated system**, participating institutions share knowledge, insights and learning through a flexible and inclusive approach, supporting national, sub-national and regional users.

The knowledge service for biodiversity builds on existing resources, facilitates exchanges and technology transfer, and connects to initiatives and opportunities to drive a mainstreaming agenda.

The end-benefit of the knowledge service is **greater institutional capacity, efficiencies in and increased visibility** of the efforts of all actors to implement and monitor the global biodiversity framework.



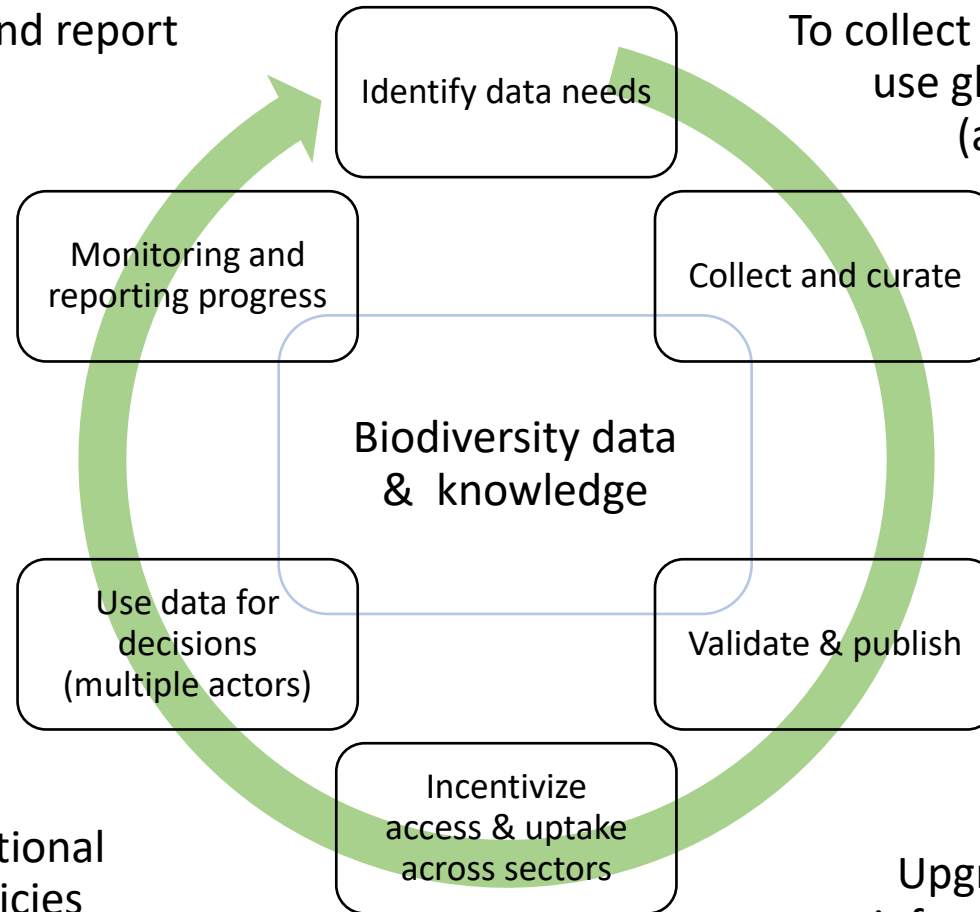
Overview of key capacity development and cooperation components



Component 1: Invest in national capacity for biodiversity data; knowledge sharing (bilateral, country TFs or GEF funding)

To monitor and report progress

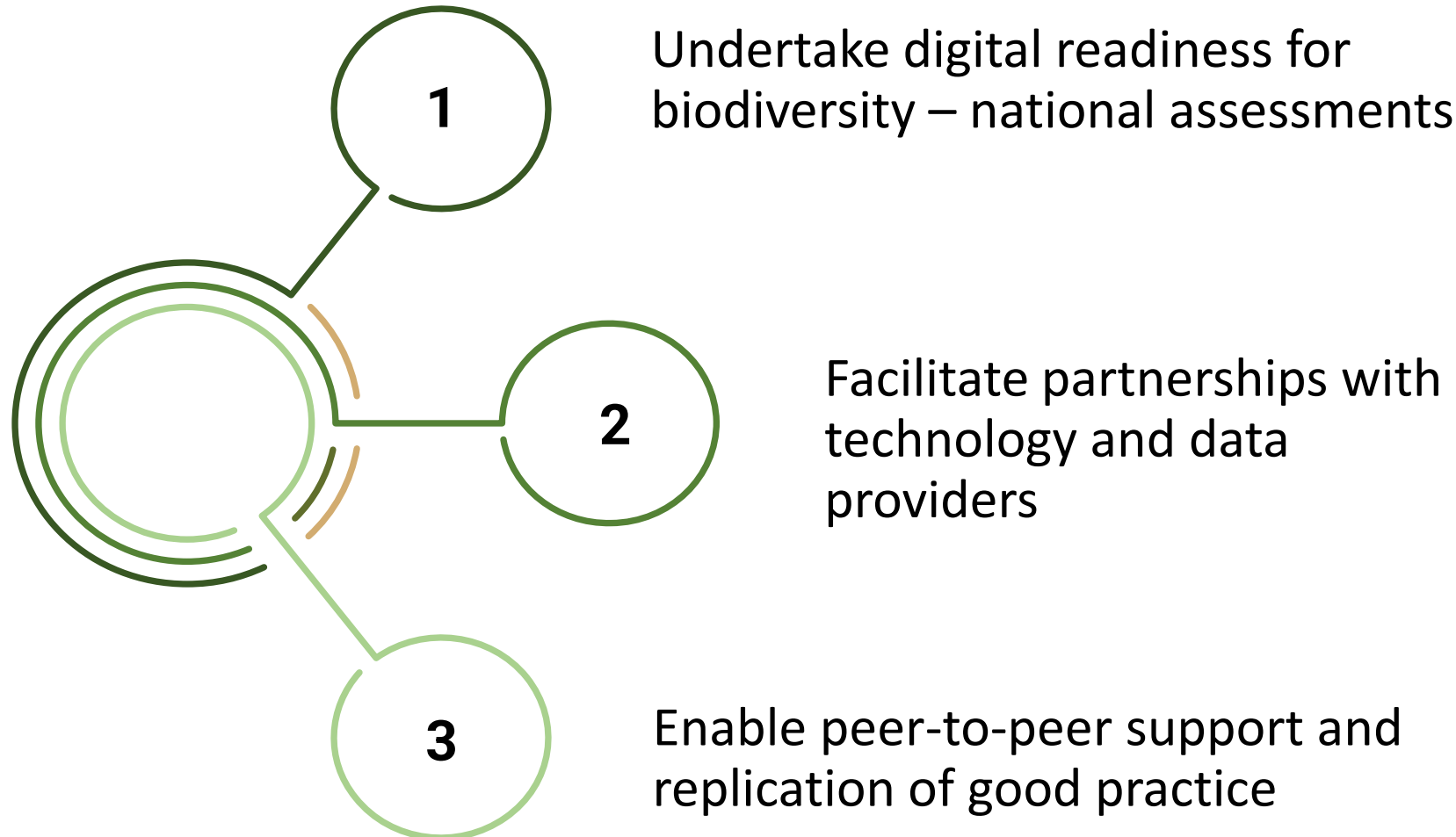
To collect national data / use global resources (as appropriate)



To use for national planning, policies & accounts

Upgrading national information systems

Component 2: Accelerate technology transfer and digital transformation strategies (bilateral, country TFs or GEF funding)



Component 3: Promote policies and standards to advance the interoperability of data and tools (inclusive, consultative processes)(global funding)

Aligned taxonomies

Temporally aligned

Ontologically linked

Traceability

Interoperability

Data-sharing Policies

Automation and APIs

Decision grade data

Fit for Purpose Licensing

Sustainable Financing

Collective efforts on national capacity development and data governance (connecting components 1 – 3)(countries / donors opt-in)



- Replicate fit for purpose data and information systems
- Create enabling institutions, policies
- Transfer technology
- Align approaches among interested countries / donors

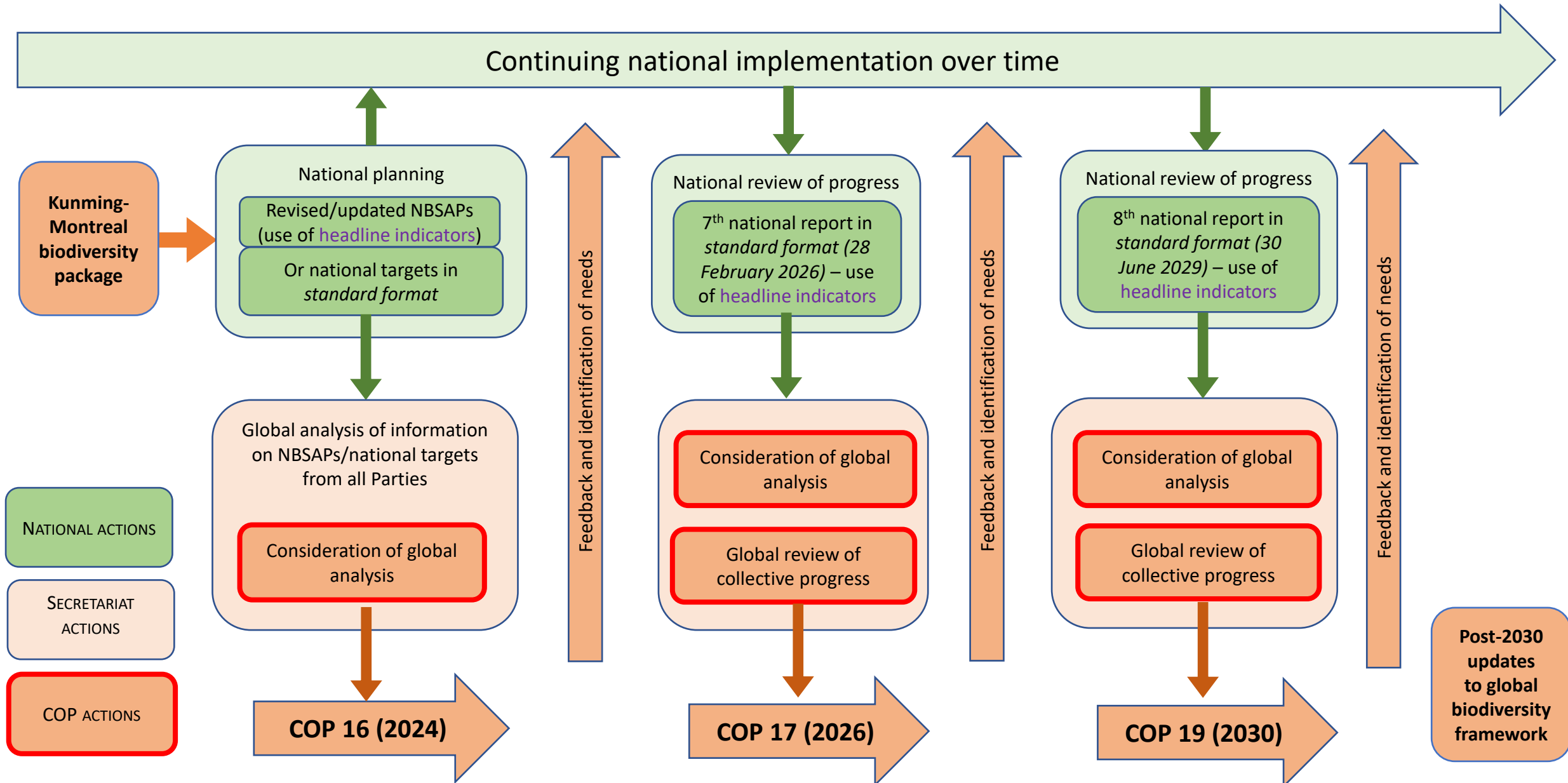
- Supporting a network of actors
- Promote automation and data-sharing
- Create efficiencies in aggregation and tracking progress
- Streamline workflows
- Enhance transparency

Component 4: Create a Biodiversity Knowledge Bank (global service to support national efforts)(global funding)

UNEP-WCMC in collaboration with FAO, UNDP, UNEP, UNSD and the CBD Secretariat

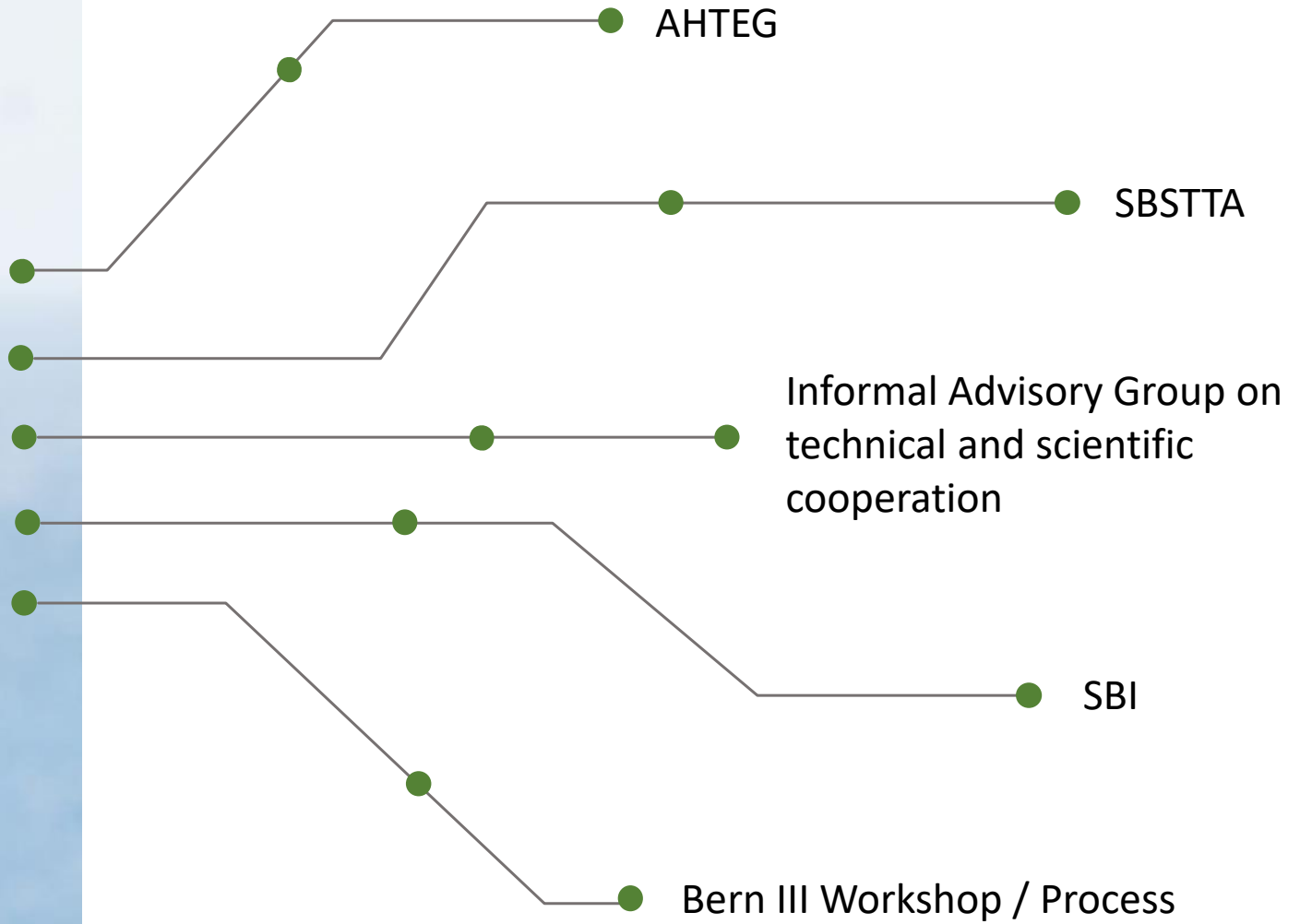
- A support service complementing and connecting existing resources and initiatives (e.g., NBSAP Accelerator)
- Organizes resources (tagged) by step in policy cycle (e.g., guidance), by GBF target (e.g., methodologies) and by country and region (e.g., policies and legal frameworks)
- Gives visibility to regional and national resources to mainstream biodiversity
- Identifies emerging needs and highlights funding opportunities to potential funders
- Directs users to existing resources, knowledge, initiatives and expertise (e.g., resources generated by the Biodiversity Indicators Partnership)
- Support preparations for meetings of the CBD and other MEA processes (e.g., support to indicator AHTEG)

CBD Implementation and reporting cycles



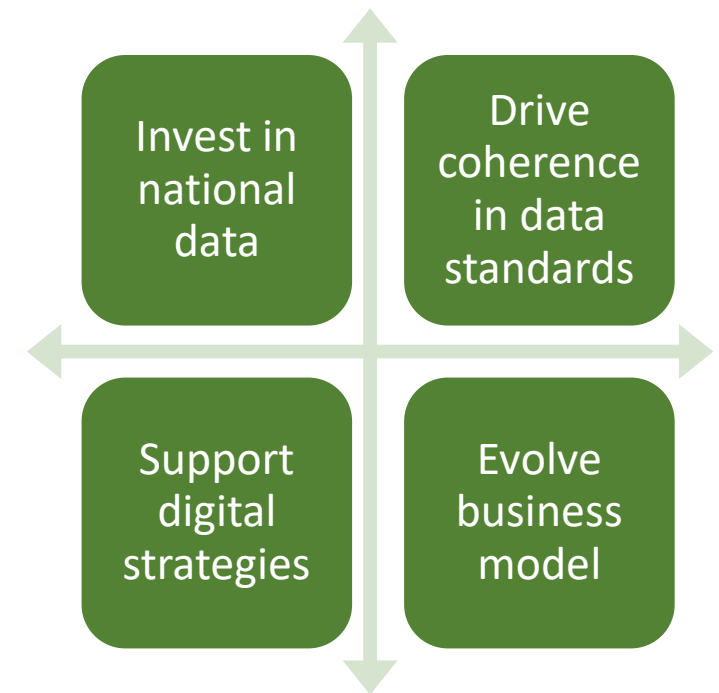


Immediate opportunities to link to CBD and other processes



Component 5: Advocate for sustainable financing of biodiversity data and knowledge (dialogue series)(global funding)

- ❑ 85/15 investment ratio for national and global efforts
- ❑ Promote greater cooperation and alignment on standards, technology transfer and digital strategies
- ❑ Dialogue with public, private and philanthropic funders to evolve the business model for biodiversity data
- ❑ Link to existing initiatives and programming cycles (e.g., GEF-8 and GEF-9)
- ❑ First policy dialogue in September 2023

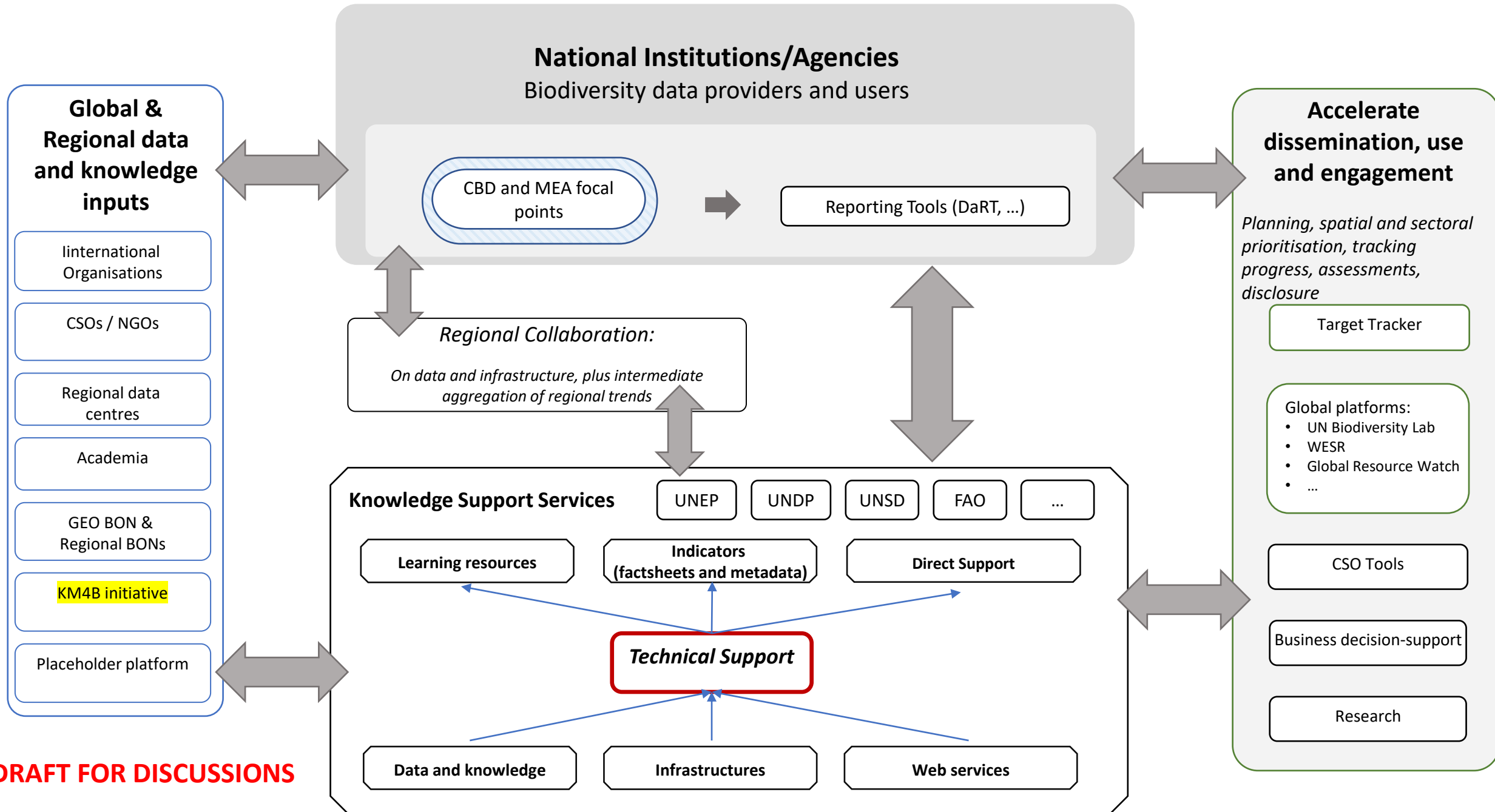


Federated delivery mechanisms for national capacity development (countries / partners opt-in)



- National and regional biodiversity institutions / agencies
- Global and regional data partners
- Technology partners
- Institutional partners FAO, UNDP, UNEP, UNSD and the CBD Secretariat
- Coordination support: UNEP-WCMC

A Global Knowledge Support Service for Biodiversity



DRAFT FOR DISCUSSIONS

Proposed governance of the Knowledge Support Service for Biodiversity

Steering Committee (Overall initiative, global funding only)

- National Institutes (Brazil, Colombia, Ecuador, India, Mexico, South Africa)
- Regional Institutions / Centres (ASEAN, Europe, South Pacific, Africa)
- Secretariats of the CBD, other MEAs
- UN Partners (FAO, UNDP, UNEP, UNSD)
- Donors (ex officio)
- Secretariat: UNEP-WCMC

Collaborating with other initiatives

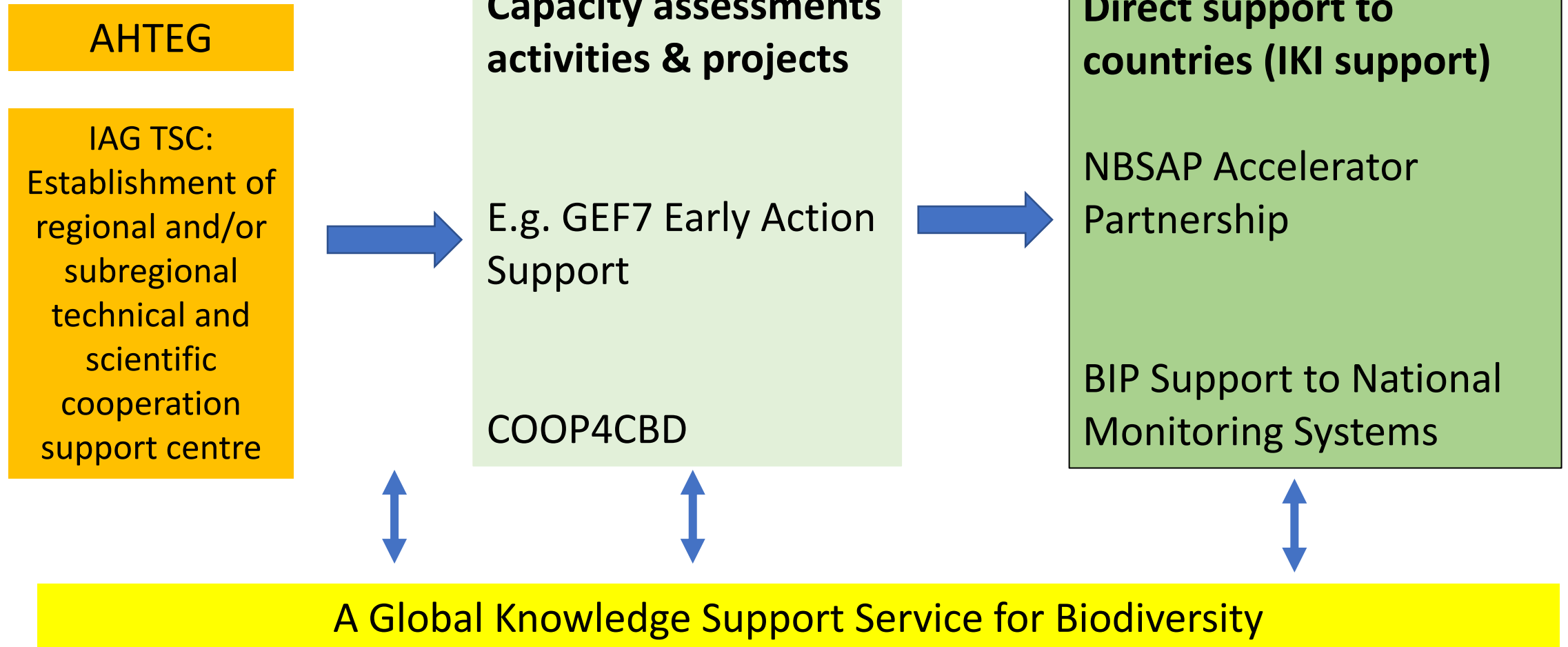
Building on existing initiatives and creating efficiencies

Opportunities linked to:

- NBSAP Accelerator and Support to National Monitoring Systems
- Kunming-Montreal Implementation Initiative
- GEO Global Ecosystem Atlas collaboration
- TNFD Data Catalyst and capacity support
- DaRT, ORS and related support to national reporting
- UNSEEA, ARIES and associated capacity development efforts
- GEF EAS with input to GEF 8 and GEF 9 programming cycles

Complementary Initiatives for Monitoring

Political processes



More information and feedback

Please see our website: <https://gkssb.chm-cbd.net/> for more information and to view this presentation

Follow –up consultation process and webinar series starting July 2023

In interim, please email any comments to: gkssb-info@unep-wcmc.org