



Knowledge Support Service for Biodiversity (part II)

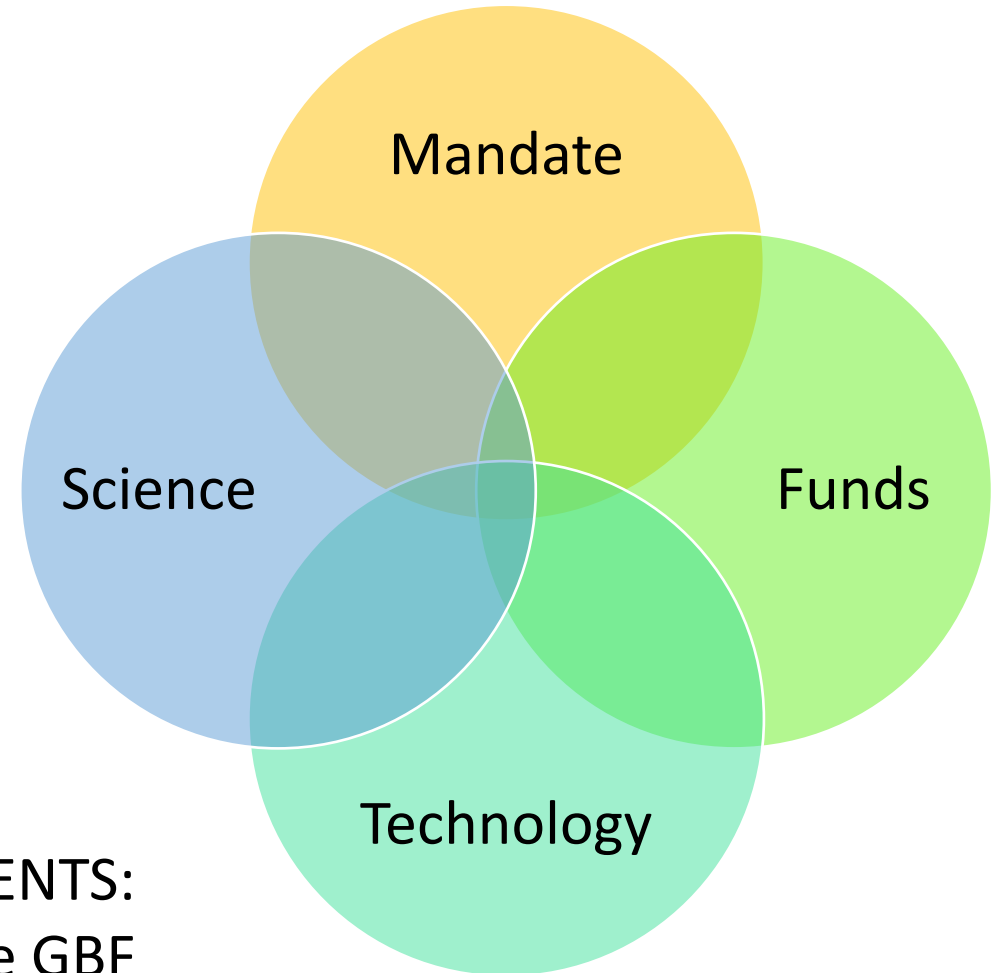
- A collaborative approach to data, knowledge and learning to accelerate nature action

Four critical elements for effective implementation of the GBF

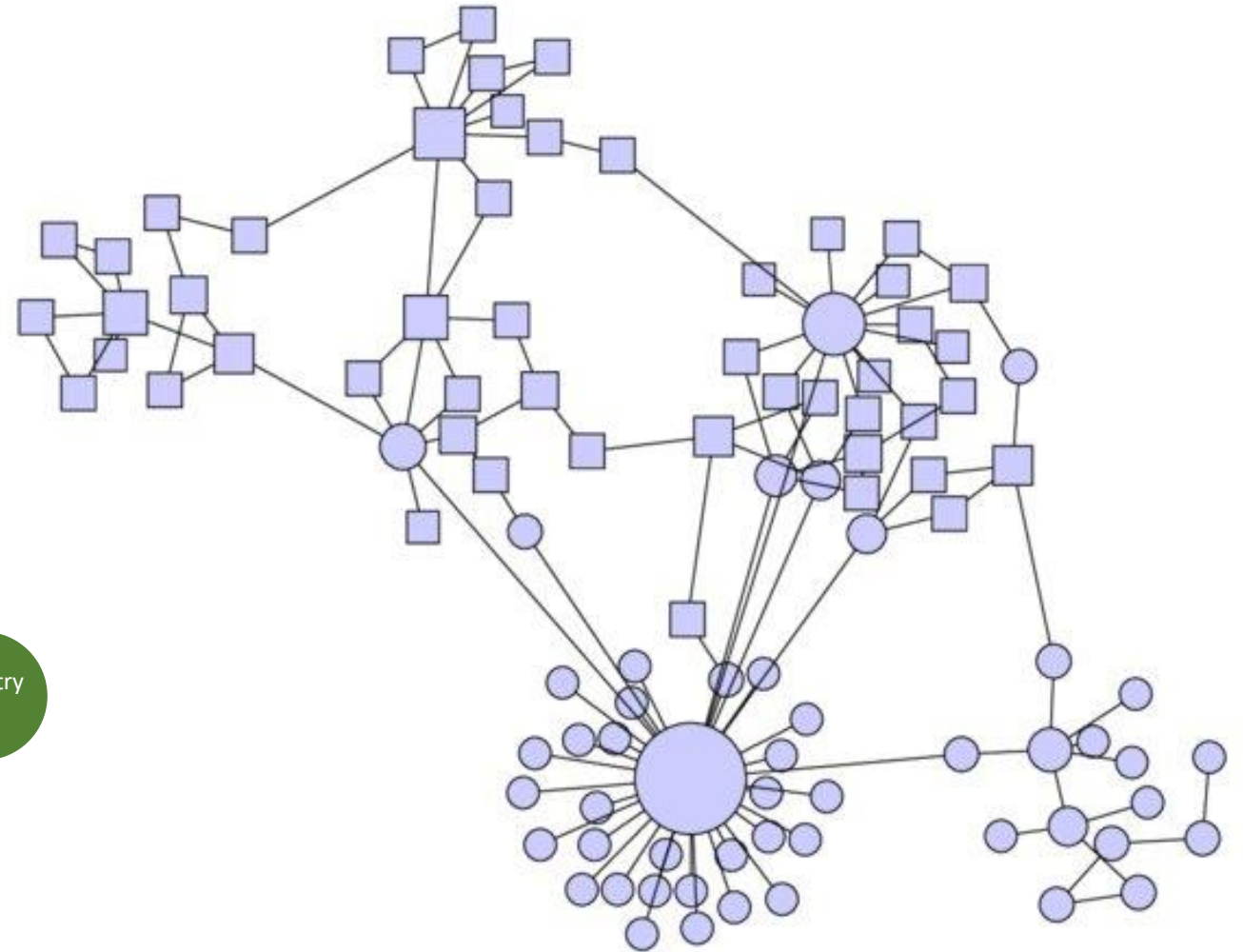
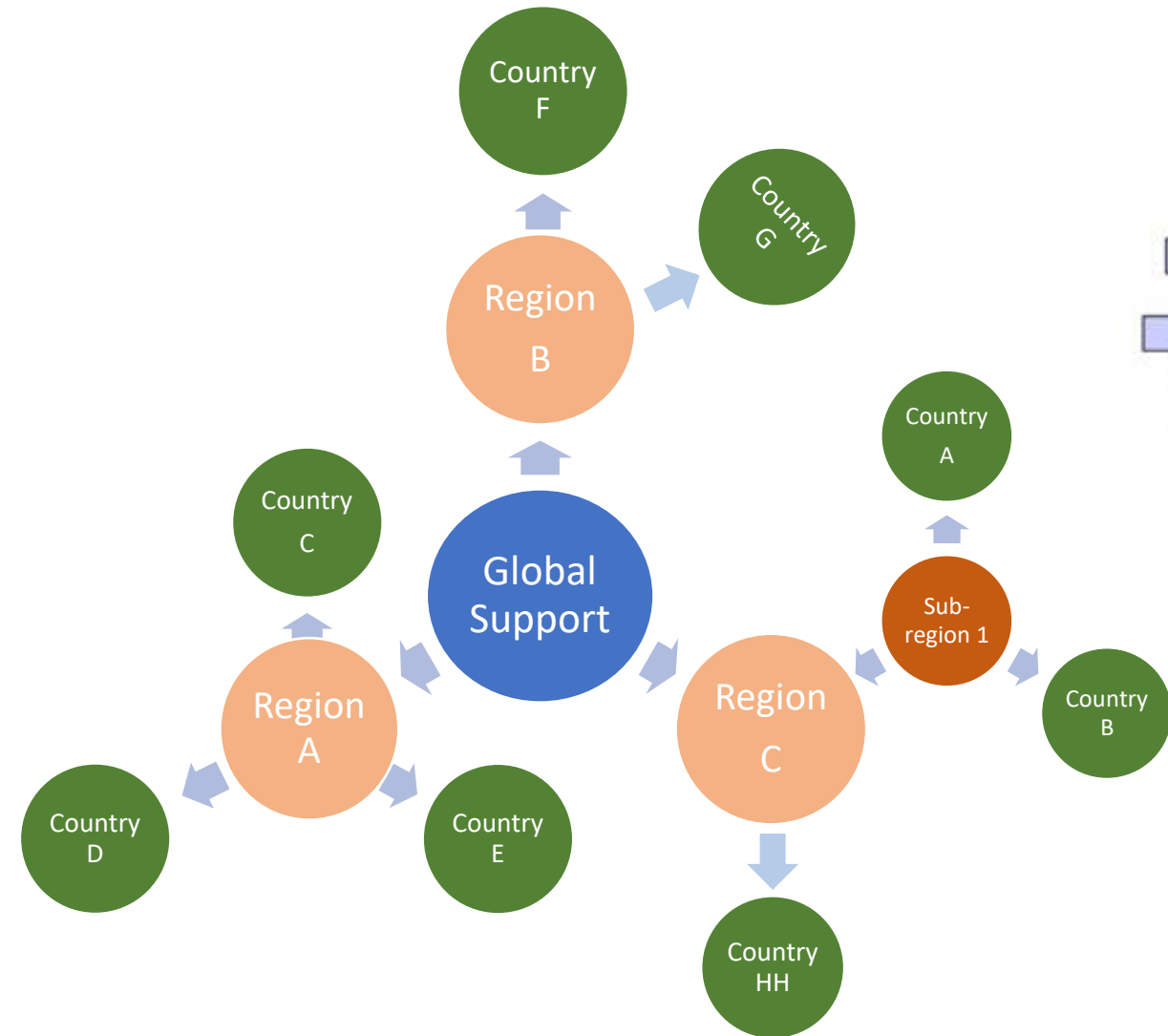
Clear **need**, and opportunity, to federate efforts of

- Existing institutions / agencies
- Scientific community
- Technology partners
- Funders / donors

NOBODY CAN PRETEND TO HAVE THE 4 CRITICAL ELEMENTS:
we need a collective approach to implementation of the GBF



Federation requires coordination



Informal Advisory Group on Technical and Scientific Cooperation (IAG TSC)

INFORMATION ▾ ABOUT THE SECRETARIAT ▾

Sign up for an account | Sign In ENGLISH ▾ Search



BIODIVERSITY CONVENTION CARTAGENA PROTOCOL NAGOYA PROTOCOL COUNTRIES PROGRAMMES

TECHNICAL AND SCIENTIFIC COOPERATION

TECHNICAL AND SCIENTIFIC COOPERATION

INFORMAL ADVISORY GROUP ON TECHNICAL AND SCIENTIFIC COOPERATION

> TSC IAG Membership

TSC MECHANISM
ACCESS TO AND TRANSFER OF TECHNOLOGY
BIO-BRIDGE INITIATIVE
CONSORTIUM OF SCIENTIFIC PARTNERS
GAMING AND VIRTUALIZATION
KNOWLEDGE FAIRS
LIFEWEB FOR FINANCING PROTECTED AREAS

TECHNICAL AND SCIENTIFIC COOPERATION // INFORMAL ADVISORY GROUP ON TECHNICAL AND SCIENTIFIC COOPERATION

Informal Advisory Group on Technical and Scientific Cooperation

The **Informal Advisory Group on Technical and Scientific Cooperation (TSC-IAG)** was established by the fifteenth meeting of the Conference of the Parties to provide strategic advice to the Executive Secretary and to relevant bodies under the Convention and its Protocols on practical measures, tools, and opportunities to promote and facilitate technical and scientific cooperation, technology transfer, capacity development, knowledge management and the clearing-house mechanism in support of the implementation of the **Kunming-Montreal Global Biodiversity Framework**.



Meetings of the TSC IAG

- First Meeting, 14-16 June 2023

TSC-IAG Forums (for members only)

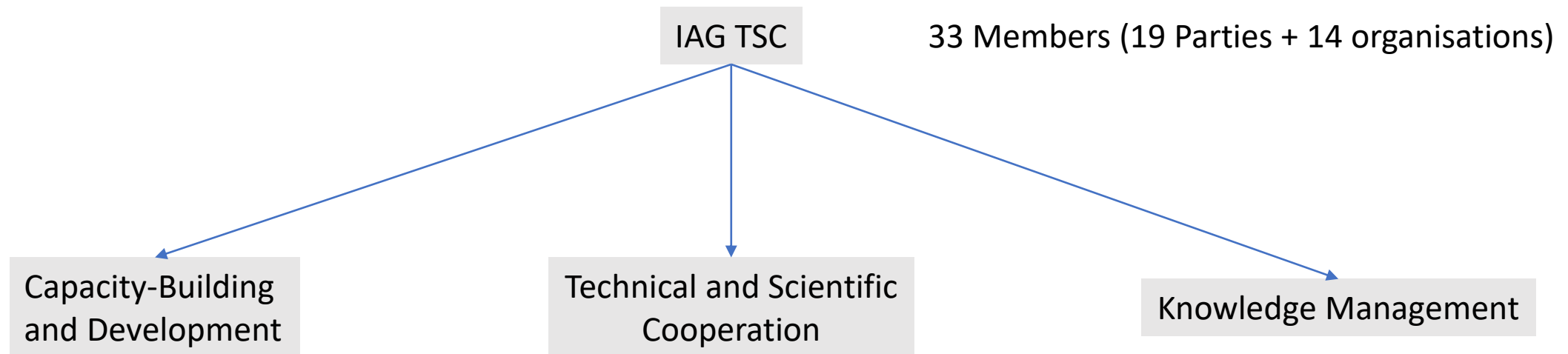
- Forum for TSC-IAG Members
- Forum on Capacity-Building and Development
- Forum on Technical and Scientific Cooperation
- Forum on Knowledge Management

Members must **sign-in using a CBD account** to post messages on the Forums.

<https://dev-chm.cbd.int/tsc/tsc-iag/>

Informal Advisory Group on Technical and Scientific Cooperation (IAG TSC)

Strategic advice to the Executive Secretary and to relevant bodies under the Convention and its Protocols on practical measures, tools, and opportunities to promote and facilitate technical and scientific cooperation, technology transfer, capacity development, knowledge management and the clearing-house mechanism in support of the implementation of the [Kunming-Montreal Global Biodiversity Framework](#).



Informal Advisory Group on Technical and Scientific Cooperation (IAG TSC)

Current work of KM team:

1) What do we have?

Review compendia of global knowledge sources for update and improvement in view to map knowledge landscape (and gaps) for the GBF

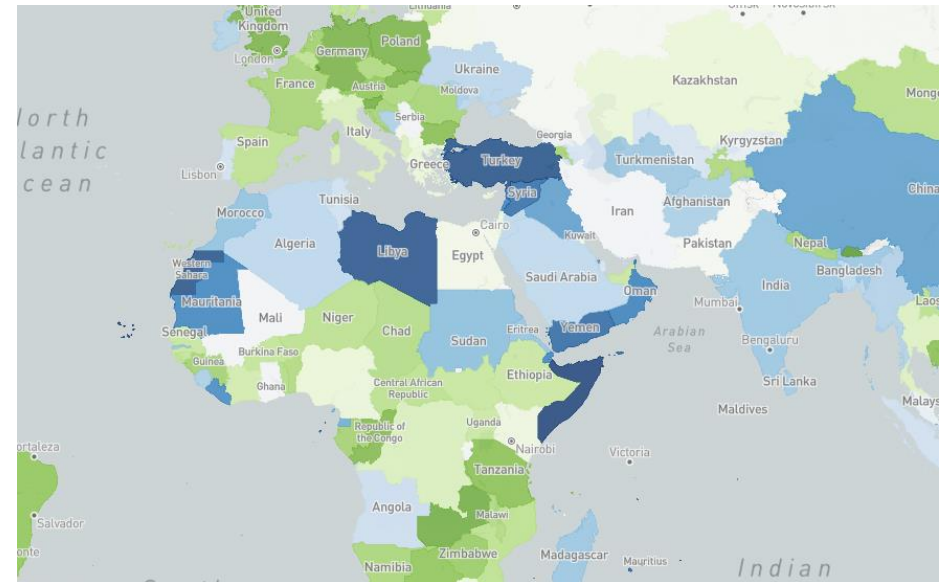
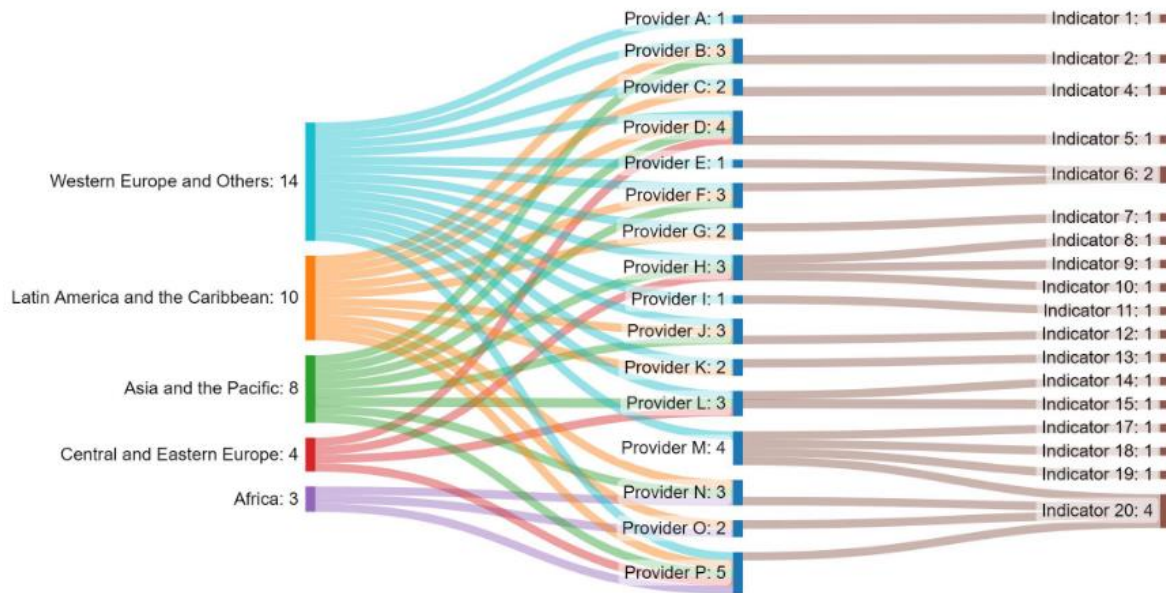
<https://dart.informea.org/compendia>



Informal Advisory Group on Technical and Scientific Cooperation (IAG TSC)

2) What do we need?

- Can we all report progress towards the 23 Targets?
- Where are the main regional gaps?
- Reuse for other MEAs?

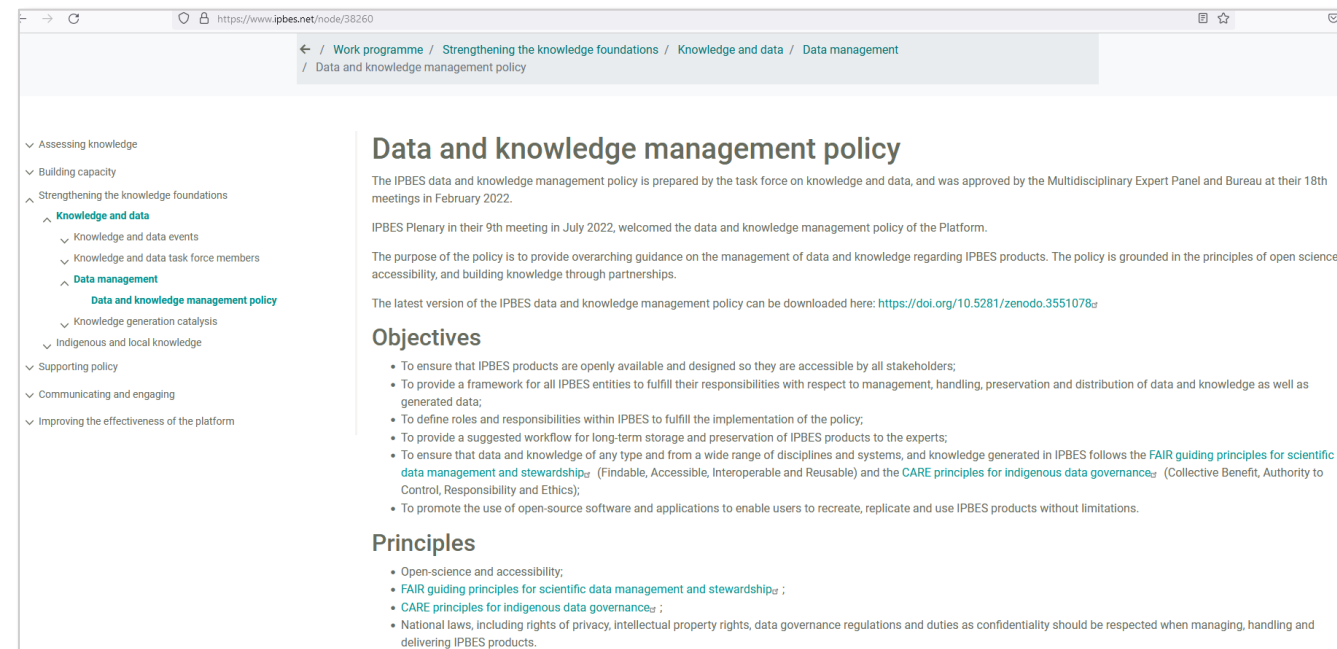


Informal Advisory Group on Technical and Scientific Cooperation (IAG TSC)

3) A few challenges...

- Conditions of use of knowledge products? FAIR and CARE principles?
- Maintenance of information (living database)?
- List of common datasets (data -> information -> knowledge)?
- Capturing indigenous knowledge?

... partly answered by IPBES task force on Knowledge and Data (see <https://www.ipbes.net/knowledge-data>)



The screenshot shows a web browser window displaying the IPBES website. The URL is <https://www.ipbes.net/node/38260>. The breadcrumb trail is: Work programme / Strengthening the knowledge foundations / Knowledge and data / Data management / Data and knowledge management policy. The page title is "Data and knowledge management policy". The main content area contains the following text:

The IPBES data and knowledge management policy is prepared by the task force on knowledge and data, and was approved by the Multidisciplinary Expert Panel and Bureau at their 18th meetings in February 2022.

IPBES Plenary in their 9th meeting in July 2022, welcomed the data and knowledge management policy of the Platform.

The purpose of the policy is to provide overarching guidance on the management of data and knowledge regarding IPBES products. The policy is grounded in the principles of open science, accessibility, and building knowledge through partnerships.

The latest version of the IPBES data and knowledge management policy can be downloaded here: <https://doi.org/10.5281/zenodo.3551078>

Objectives

- To ensure that IPBES products are openly available and designed so they are accessible by all stakeholders;
- To provide a framework for all IPBES entities to fulfill their responsibilities with respect to management, handling, preservation and distribution of data and knowledge as well as generated data;
- To define roles and responsibilities within IPBES to fulfill the implementation of the policy;
- To provide a suggested workflow for long-term storage and preservation of IPBES products to the experts;
- To ensure that data and knowledge of any type and from a wide range of disciplines and systems, and knowledge generated in IPBES follows the [FAIR guiding principles for scientific data management and stewardship](#) (Findable, Accessible, Interoperable and Reusable) and the [CARE principles for indigenous data governance](#) (Collective Benefit, Authority to Control, Responsibility and Ethics);
- To promote the use of open-source software and applications to enable users to recreate, replicate and use IPBES products without limitations.

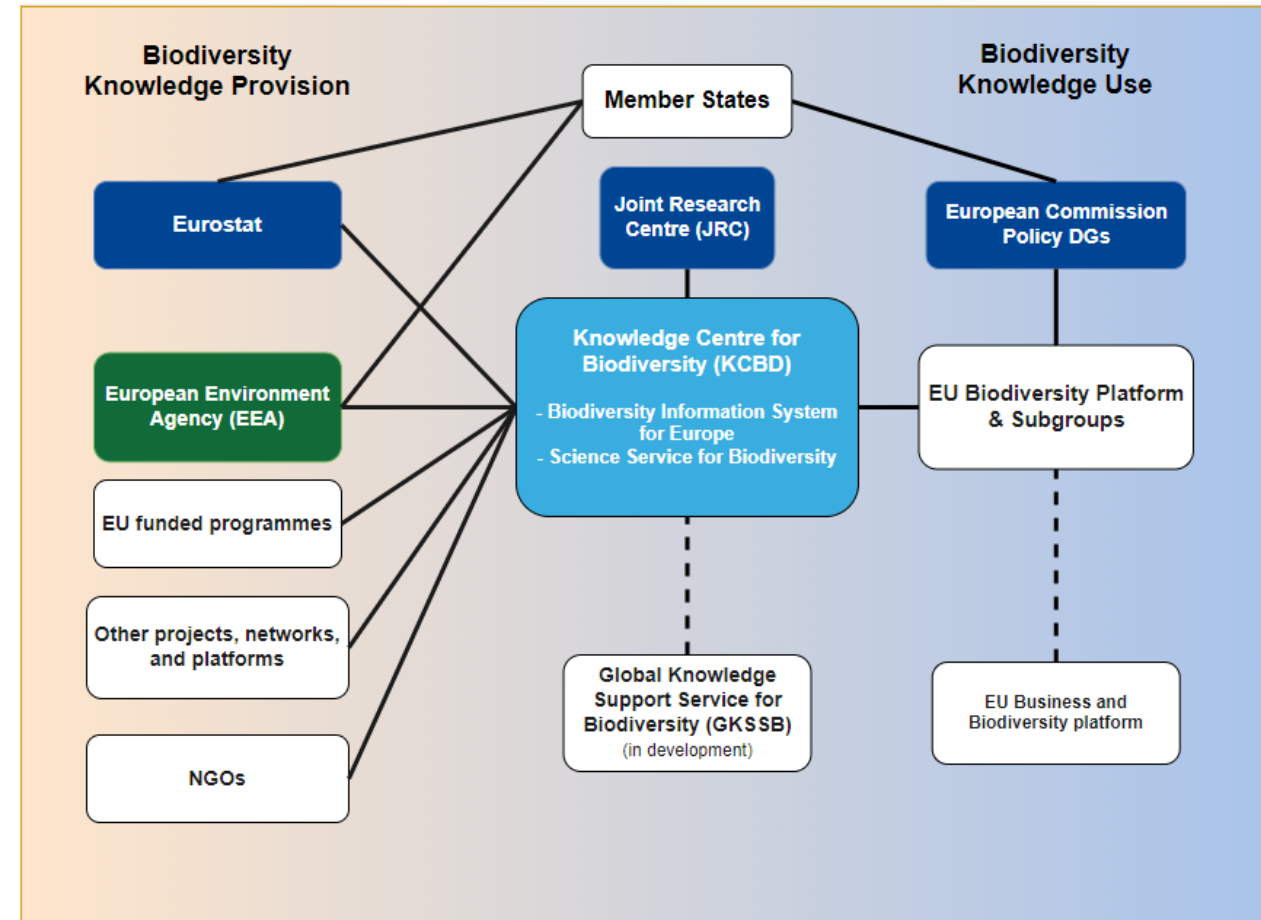
Principles

- Open-science and accessibility;
- [FAIR guiding principles for scientific data management and stewardship](#) ;
- [CARE principles for indigenous data governance](#) ;
- National laws, including rights of privacy, intellectual property rights, data governance regulations and duties as confidentiality should be respected when managing, handling and delivering IPBES products.

Example of the EU's Knowledge Centre for Biodiversity (KCBD)

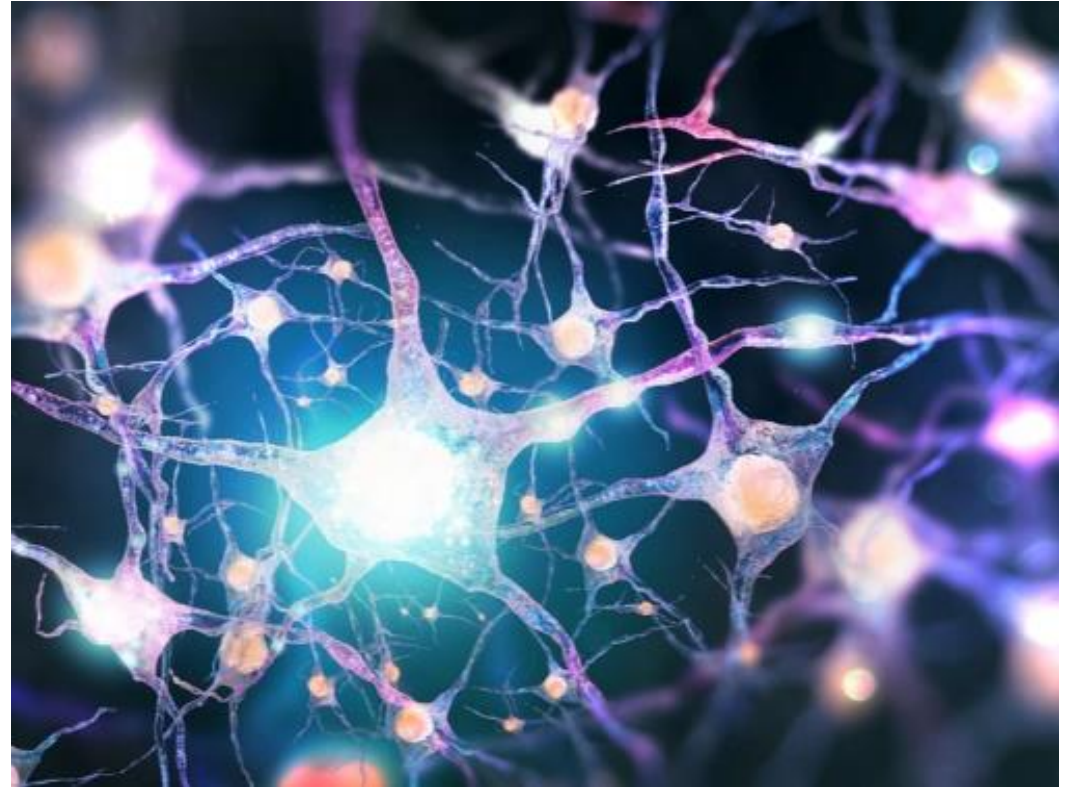
- ❑ Support to **coordination** of complex interactions between many actors
- ❑ Help for **prioritization** of support requests
- ❑ **Technical and scientific service** for the implementation of EU biodiversity strategy

KCBD is a small but key component in the knowledge landscape developing the main bridges for the implementation of the strategy



Conclusions on the GBF challenge and the support of a Global Knowledge Service

- ❑ GBF is a unique opportunity for strengthening collaboration, knowledge transfer and capacity building around a **common objective – GBF**. We will need everyone on board!
- ❑ Complex networks require **coordination** but also **flexibility and filters** (we need a brain!)
- ❑ A Global Knowledge Support Service for Biodiversity will be essential, it should not be large and expensive but it needs to be effective! (*more like a Secretariat*).
- ❑ Main resources must go to build capacity of Parties and major groups



© Andrii Vodolazhskyi, Shutterstock